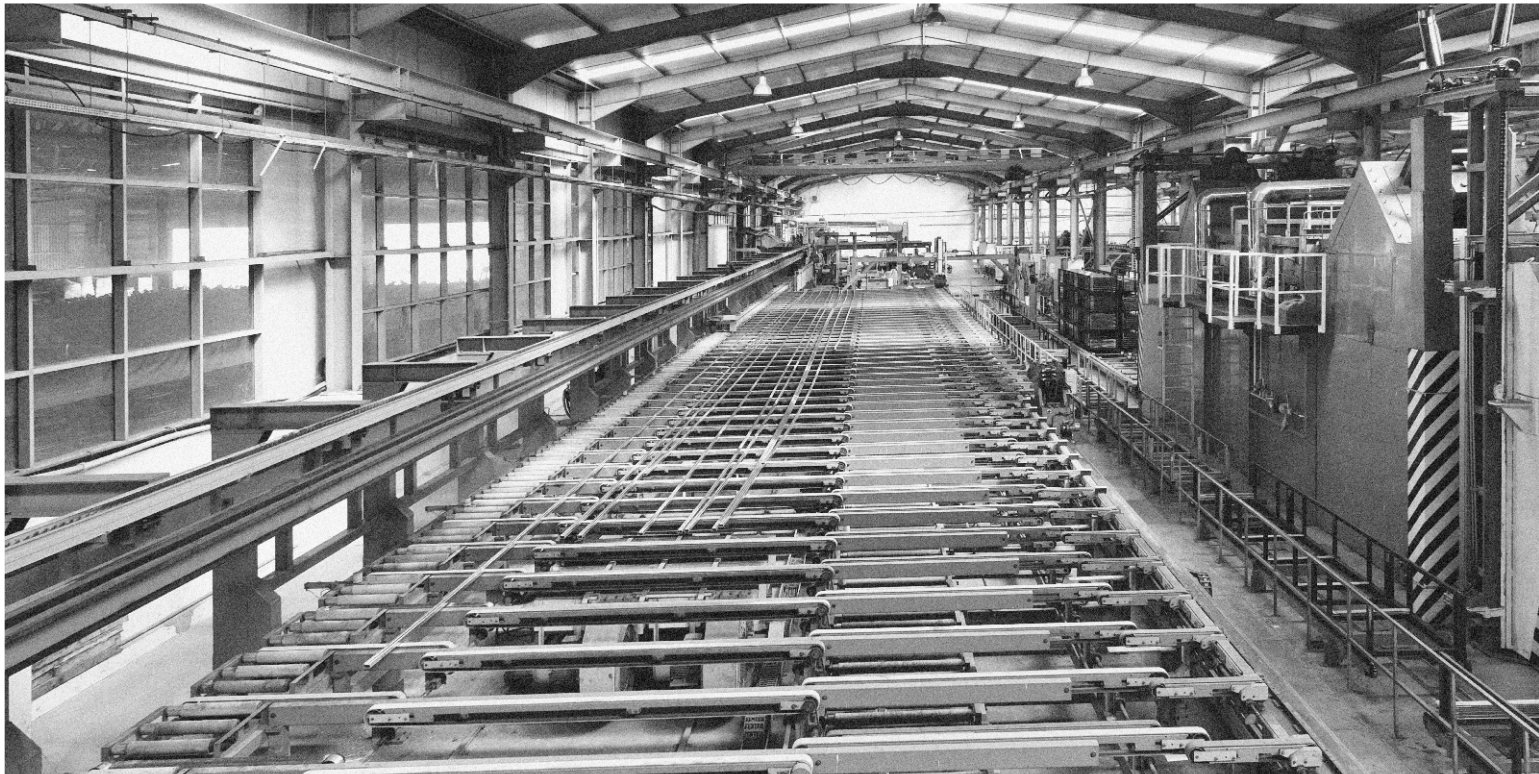
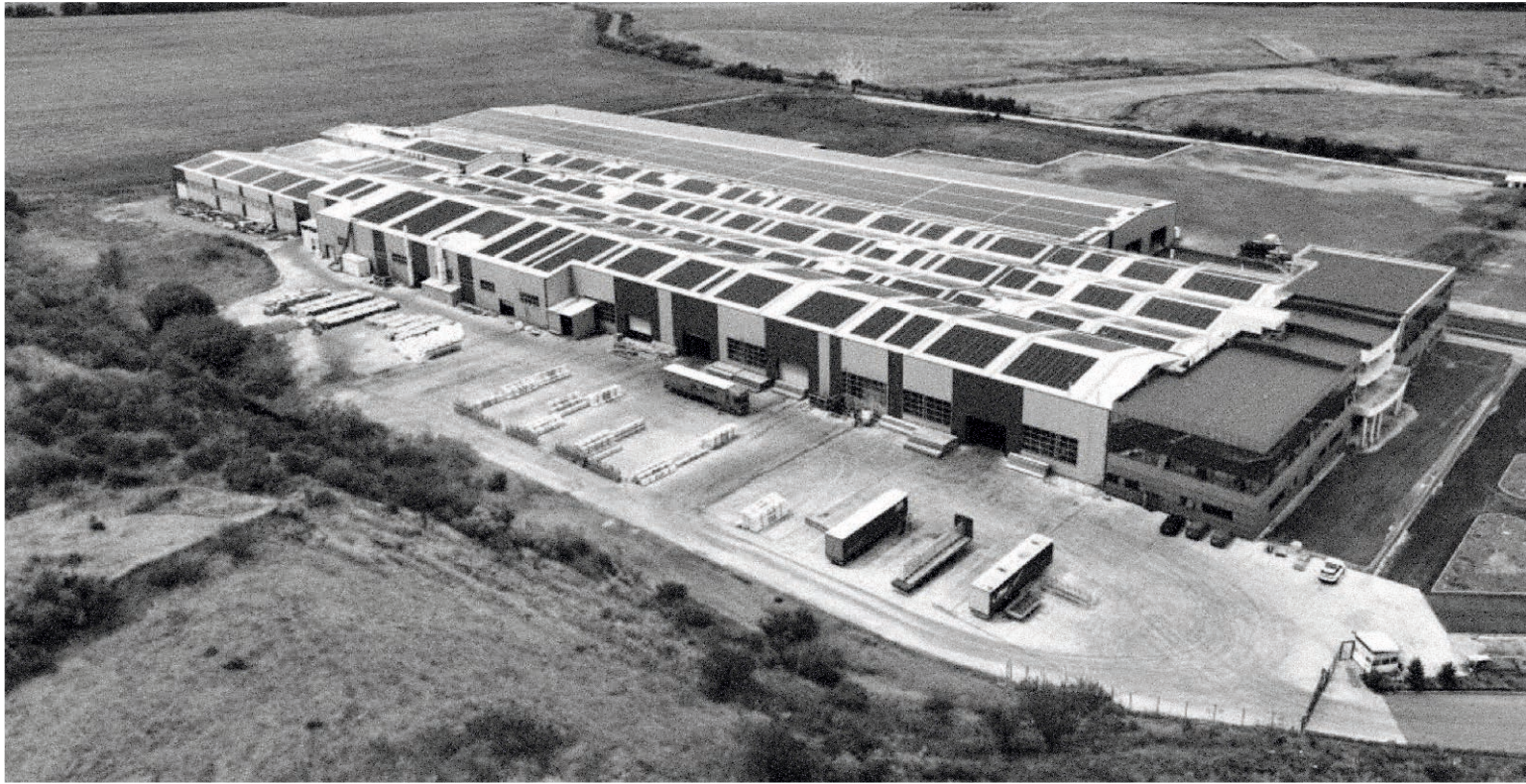




**ALTEST**<sup>®</sup>  
ALUMINIUM PROFILE SYSTEMS

**Architectural**Systems



### **About Us**

ALTEST Ltd. was founded in 1992 in Burgas, Bulgaria, by a visionary entrepreneur with a strong desire to foster growth and innovation in his country.

### **Our Main Business Activity**

For over 30 years, ALTEST has been a leading manufacturer of aluminium and PVC profiles. The company boasts an impressive industrial capacity, spanning over 100,000 square meters. This extensive infrastructure supports the entire production cycle, including extrusion, anodising, painting, sublimation, packaging, processing, storage, distribution, and sales.

### **Our Systems**

Strengthened by its experience and thanks to the results obtained, in 2000 ALTEST began to develop and present complete systems and solutions on the market for different architectural needs innovative, cutting-edge solutions capable of guaranteeing performance, quality and design. Today ALTEST is the undisputed leader in the Balkans and one of the most important players in the world.

### **Our Team**

A crucial factor in ALTEST's success is its highly qualified team of employees and collaborators. Today, ALTEST employs over 650 talented specialists who bring their skills and innovative ideas to their daily work.

### **Certifications and Awards**

ALTEST's products are valued both nationally and internationally and are certified by:

#### **ISO Certifications:**

- ▲ Altest Qualanod Certificate: Anodic oxidation of aluminium profiles.
- ▲ Altest Qualicoat Certificate: Quality coatings for aluminium profiles.
- ▲ Altest ISO 9001:2015: Design, manufacture, and sale of aluminium extruded profiles and architectural systems.

#### **Awards:**

- ▲ Golden Trophy for Quality Award of Excellence, Paris, France 2008.
- ▲ Best Quality 2008 and 2009 by the Bulgarian Chamber of Commerce and Industry.
- ▲ Burgas Business Awards 2022: First place in the 'Industrial Production' sector.

### **Innovation**

Every year, ALTEST invests 3% of its turnover in Research & Development, the core of the company. Innovation drives growth.

### **Extrusion**

Our extrusion process allows for the creation of products in various sizes and shapes, from the simplest to the most complex. These moulds are designed for different sectors, including mechanics, design, electronics, and the automotive industry.

### **Manufacturing**

All aluminium machining processes are performed in-house with machines and equipment that meet European quality and energy efficiency standards.

### **Design**

Our products combine high performance with aesthetic appeal, reflecting the latest sophisticated and minimalist market trends.

### **Ethics and Responsibility**

ALTEST is committed to responsibility and sustainability, adhering to the principles outlined in the company's Code of Ethics. Continuous professional training for employees and collaborators is fundamental for ALTEST. Our environmental commitment includes recycling and reusing all production waste and utilizing renewable energy sources, promoting sustainability for a circular economy and a better future for our community.



The industrial profile business unit is a key factor in establishing ALTEST as a leader in the aluminium industry. ALTEST's Research and Development Division is composed of a highly skilled team of engineers responsible for designing, developing, and integrating products into the production process to meet the demands of its most discerning clients. ALTEST leverages advanced technology and flexible manufacturing, along with the expertise of its experienced workforce, to produce specialized aluminum profiles. These profiles are designed to meet the demands of industries that require cutting-edge and innovative solutions. A dedicated Quality Control department conducts rigorous daily testing throughout the entire production process, ensuring the highest standards of product quality.

Products of the brand Altest are valued on national and international level and they are certified based on ISO:



**Altest CE marking:**

Conformité Européenne (CE) certification is a regulatory standard that verifies certain products are safe for sale and use in the European Economic Area



**Altest Performance Certificates:**

In our company, every aluminum system, new or existing, comes with the necessary performance certificates. Our ongoing collaboration with globally recognized institutes gives us a competitive edge, ensuring our products consistently improve the end user's quality of life.



**Altest Qualanod Certificate:**

Certificate for the anodic oxidation of aluminium profiles.



**Altest Qualicoat Certificate:**

Quality Certificate for aluminium profile coatings.



**Altest ISO 9001:2015:**

Design, manufacture and sale of aluminum extruded profiles and architectural systems.



ALTEST

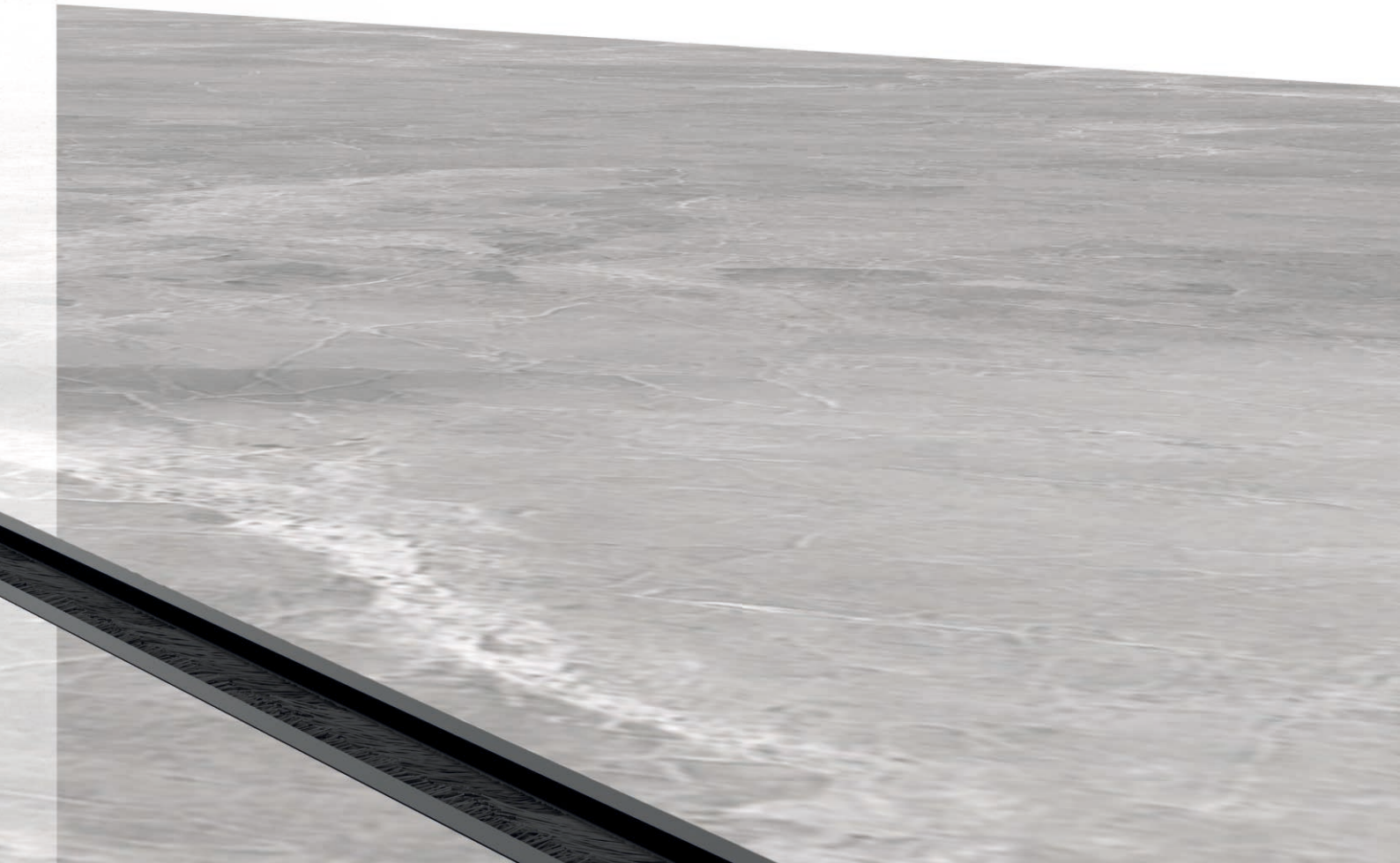


ALTEST



Altest is a leading system provider specializing in innovative facades for luxury real estate projects. Our designs reflect the latest architectural trends, tailored to meet the ultra-luxury requirements of our distinguished clients.

Our diverse product portfolio offers unique solutions for minimalist architecture, expansive openings, high thermal efficiency, and seamless integration of outdoor and indoor spaces. Additionally, our advanced façade shading systems provide extra protection against extreme weather while adding a distinctive design element to each project.





Minimal sliding system with integrated water drainage, precision in movement, simple and functional design. The possibility of fully integrating the fixtures into the base of the construction creates a feeling of unrestricted connection between interior and exterior space with style and lightness.







**ALTEST**  
**SL520**  
 MINIMAL SLIDING THERMAL SYSTEM

TECHNICAL CHARACTERISTICS

Frame Height, Vertical	<b>42 mm</b>
Frame Height, Horizontal Bottom	<b>57 / 67 mm</b>
Frame Height, Horizontal Top	<b>60 mm</b>
Frame Width	<b>62 / 133 / 205 / 276 mm</b>
Tile Insert	<b>≥ 20mm</b>
Floor Typology	<b>Step, Submerged</b>
Riding Typology	<b>Blade</b>
Sash Height, Vertical	<b>16 / 20 / 30 mm</b>
Sash Height, Horizontal	<b>29 mm</b>
Sash Width	<b>47 mm</b>
Centre Mullion Visible Height	<b>16 / 20 mm</b>
Max. Weight per Sash	<b>600 kg</b>
Max. Sash Width	<b>3000 mm</b>
Max. Sash Height	<b>4000 mm</b>
Glazing Width Possibilities	<b>32mm</b>
Glazing type	<b>Bonding</b>
Maximum Locking Points	<b>6</b>
Sealing Type	<b>Brush with Cloth + Q-Lon</b>

Performances

Fabrication Thermal Transmittance EN ISO 10077-2 **(Uw) = 1.3 W/(m²K)**





**ALTEST**  
**SL51**


MINIMAL SLIDING THERMAL SYSTEM

TECHNICAL CHARACTERISTICS

Frame Height, Vertical	<b>42 mm</b>
Frame Height, Horizontal Bottom	<b>42 mm</b>
Frame Height, Horizontal Top	<b>60 mm</b>
Frame Width	<b>62 / 133 / 205 / 276 mm</b>
Floor Typology	<b>Step, Submerged</b>
Riding Typology	<b>Hovering / Submerged</b>
Sash Height, Vertical	<b>20 / 30 mm</b>
Sash Height, Horizontal	<b>38 / 53 mm</b>
Sash Width	<b>47 mm</b>
Centre Mullion Visible Height	<b>20 mm</b>
Max. Weight per Sash	<b>600 kg</b>
Max. Sash Width	<b>3000 mm</b>
Max. Sash Height	<b>4000 mm</b>
Glazing Width Possibilities	<b>32mm</b>
Glazing type	<b>Glazing bit / Bonding</b>
Maximum Locking Points	<b>6</b>
Sealing Type	<b>Brush with Cloth + Q-Lon</b>

Performances

Fabrication Thermal Transmittance EN ISO 10077-2 **(Uw) = 1.3 W/(m²K)**



**ALTEST minimal bi-fold doors are the slimmest in the world, with a sash profile as narrow as 27mm (68mm combined mullion). These slim bi-folding doors can be as tall as 3.5 meters and as wide as 1.3 meters.**

**Our slim bi-folding doors feature tracks that can be as low as 43mm, with options for fully submerged tracks. We also offer infinity floor and ceiling options.**



# ALTEST FS47

SLIM FOLD SLIDE THERMAL SYSTEM


## TECHNICAL CHARACTERISTICS

Bottom Track Height	60 / 76 mm
Floor Step	0 / 12 / 28 / 48 / 60 / 64 / 76 mm
Frame Height, Horizontal Top	83 / 100 mm
Frame Height, Vertical	57 mm
Frame Width	60 mm
Floor Typology	<b>Step, Submerged</b>
Riding Typology	<b>Bottom Rolling</b>
Sliding / Alignment Rollers	<b>Stainless Steel</b>
Sash Height, Vertical	39 mm
Sash Height, Horizontal	39 mm
Sash Width	60 mm
Centre Mullion Height	92 mm
Max. Weight per Sash	130 Kg
Max. Sash Width	1300 mm
Max. Sash Height	3500 mm
Glazing Width Possibilities	32 / 45 mm
Maximum Locking Points	5
Sealing Type	<b>4 Gaskets</b>

## Performances

Fabrication Thermal Transmittance EN ISO 10077-2

**(Uw)  $\geq 1.0$  W/(m<sup>2</sup>K)**



ALTEST Pivot Slide Systems are similar to Bi-fold systems but use different hardware. These doors are easier to use and can have sashes up to 2 meters wide. Pivot positions range from 1/3 to 1/2 the width of the sash. The doors can be up to 4 meters high. We also offer electric models that can handle up to 6 sashes, with two opposing sets covering up to 24 meters in width. These doors are available with very low tracks (43mm) and options for fully submerged tracks. They also offer the possibility of infinity floor and ceiling options. These are some of the slimmest doors available, with sash profiles starting at 27mm.



# ALTEST PS47

SLIM PIVOT SLIDE THERMAL SYSTEM

## TECHNICAL CHARACTERISTICS

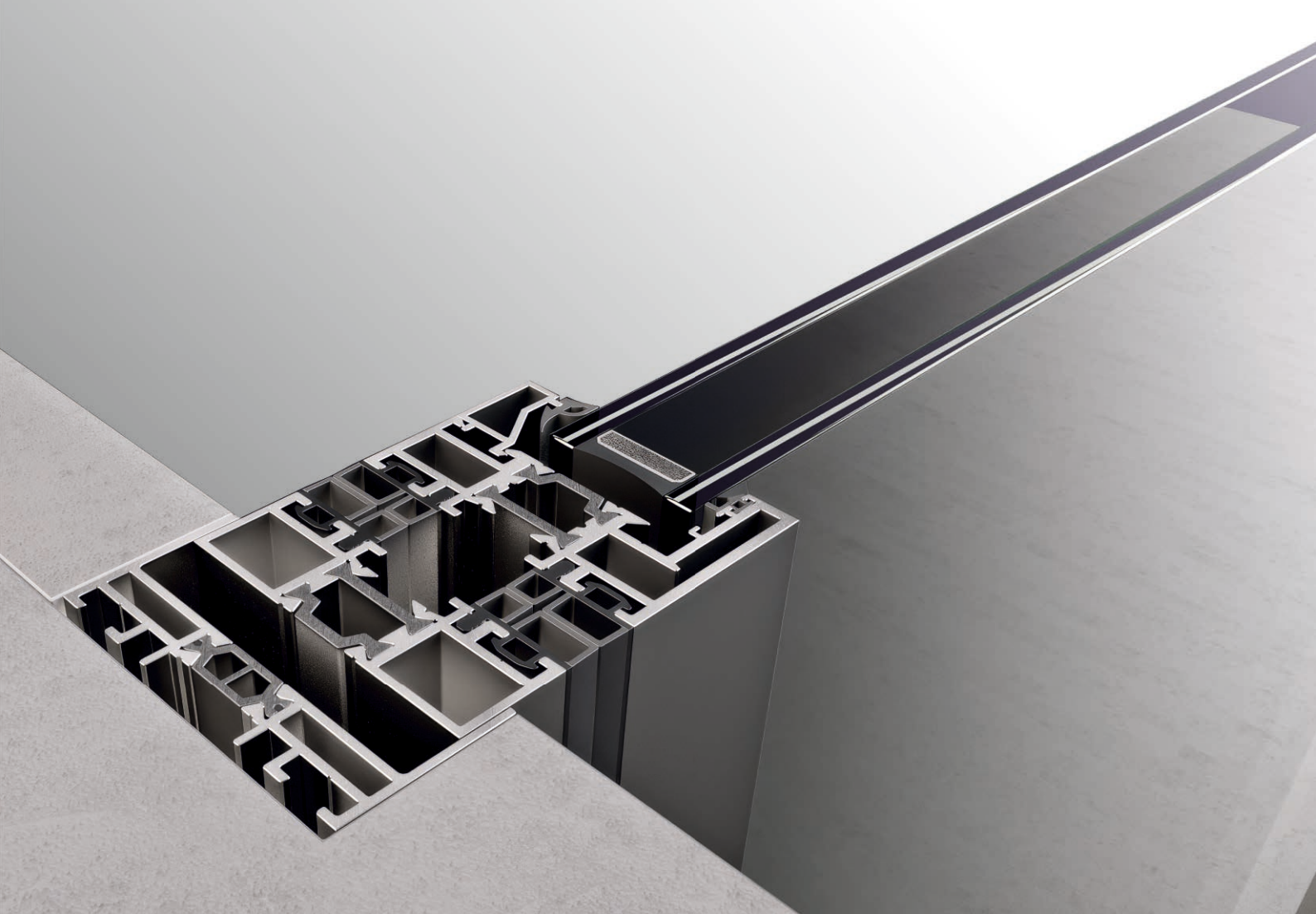
Bottom Track Height	60 / 76 mm
Floor Step	0 / 12 / 48 / 60 mm
Frame Height, Horizontal Top	67 / 84 mm
Frame Height, Vertical	57 mm
Frame Width	60 mm
Floor Typology	<b>Step, Submerged</b>
Riding Typology	<b>Bottom Rolling</b>
Sliding / Alignment Rollers	<b>Stainless Steel</b>
Sash Height, Vertical	39 mm
Sash Height, Horizontal	39 mm
Sash Width	60 mm
Centre Mullion Height	92 mm
Max. Weight per Sash	300 Kg
Max. Sash Width	2000 mm
Max. Sash Height	4000 mm
Glazing Width Possibilities	32 / 45 mm
Maximum Locking Points	5
Sealing Type	<b>4 Gaskets</b>

## Performances

Fabrication Thermal Transmittance EN ISO 10077-2 **(Uw)  $\geq 1.0$  W/(m<sup>2</sup>K)**







**ALTEST**  
**PD110**  
 MINIMAL SLIM PIVOT DOOR SYSTEM

TECHNICAL CHARACTERISTICS

Frame Profile Height	<b>40 mm</b>
Frame Profile Width	<b>60 mm</b>
Sash Profile Height	<b>36 mm</b>
Sash Profile Width	<b>60 mm</b>
Opening Type	<b>Pivot</b>
Max sash width	<b>2000 mm</b>
Max sash height	<b>5000 mm</b>
Max Sash weight	<b>300 Kg</b>
Glazing width possibilities	<b>32 / 45 mm</b>
Max Locking Points	<b>9</b>
Thermal Break width	<b>20 / 24</b>
Sealing Type	<b>3 Gaskets</b>
Fabrication thermal transmittance	<b>(Uw) <math>\geq 1.0</math> W/(m<sup>2</sup>K)</b>





**ALTEST**  
**HS97**

MINIMAL SUPER SLIM CASEMENT HINGED SYSTEM

TECHNICAL CHARACTERISTICS

Frame Profile Height	<b>25 mm</b>
Frame Profile Width	<b>60 mm</b>
Sash Profile Height	<b>27 / 36 mm</b>
Sash Profile Width	<b>60 mm</b>
Opening Type	<b>Hinged</b>
Max sash width	<b>1400 mm</b>
Max sash height	<b>5000 mm</b>
Max Sash weight	<b>300 Kg</b>
Glazing width possibilities	<b>32 / 45 mm</b>
Max Locking Points	<b>9</b>
Thermal Break width	<b>20 / 24</b>
Sealing Type	<b>3 Gaskets</b>
Fabrication thermal transmittance	<b>(Uw) <math>\geq 0.9</math> W/(m<sup>2</sup>K)</b>



**Butterfly 70 is a unique system with no threshold, since the pulley are hidden on the top. All the accessories are hidden in the frame allowing symmetrical sashes and wide opening. It supports structural glazing from 32 up to 62 mm with a load of 400 k per sash, manual or automatic opening.**

**The system is known for its innovative, modern and minimalist design combined with ease and speed of installation.**



**ALTEST**  
**BFS70**  
SLIM LIFT & SLIDE THERMAL SYSTEM

**Zero threshold.** Total absence of architectural barriers.

**No dust collection.** No problems of dust collection in the lower part. Zero maintenance, zero cleaning problem.

**Easy opening** with maximum smoothness both in manual and automatic (possibility to integrate with home automation).

**Top rail solution** with hanging sashes eliminates the lower rail.

**Minimal system** with symmetric sashes with excellent brightness.

**Opening system** on the frame manual with handle or automatic with a simple button or through an app.

**Flexibility of dimension** with sash load capacity up to 400 kg manual or automatic version

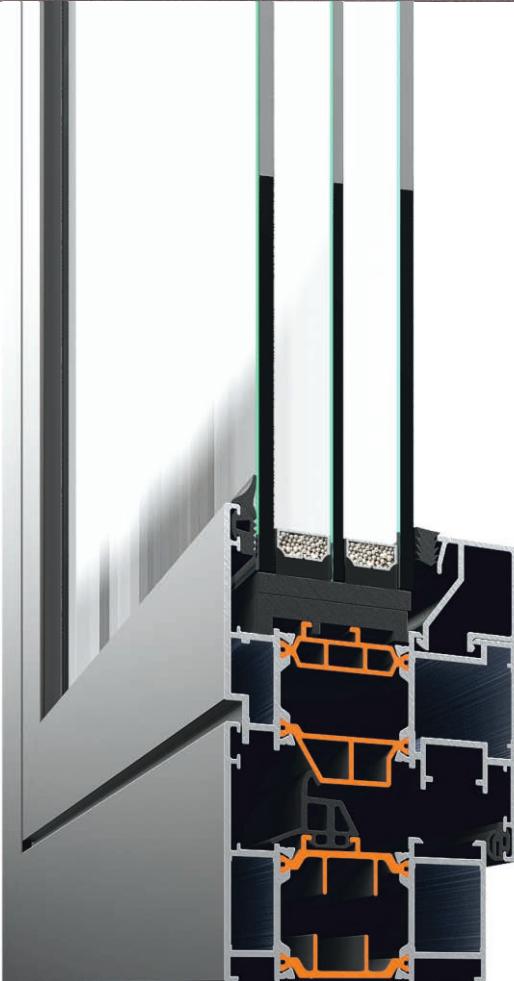


## **ALTEST** **WDS70** CASEMENT HINGED THERMAL SYSTEM

The window and door system WDS 70 of Altest is based on a 70mm thermally broken aluminium frame series designed according to European standards and it is available with European Standard groove as well with 16 mm groove.

It is a thermal break system with 34mm polyamide on the frame profile and 34mm for the sash.

The system consists of wide composition of profiles suitable for many kinds of typologies and architectural solutions. It is designed to fulfil exterior and interior architectural applications where thermal break is required. The system WDS 70 is suitable for different version of opening and fixed systems. The range of profiles, modern accessories and gaskets of EPDM guarantee high performance, excellent drainage, high thermal resistance, high acoustic performance, and high wind resistance. The series is suitable also for tilt and turn mechanism with a PVC groove. Versions of fixed, vertical and horizontal opening windows as well as fixed and opening sections doors are possible.

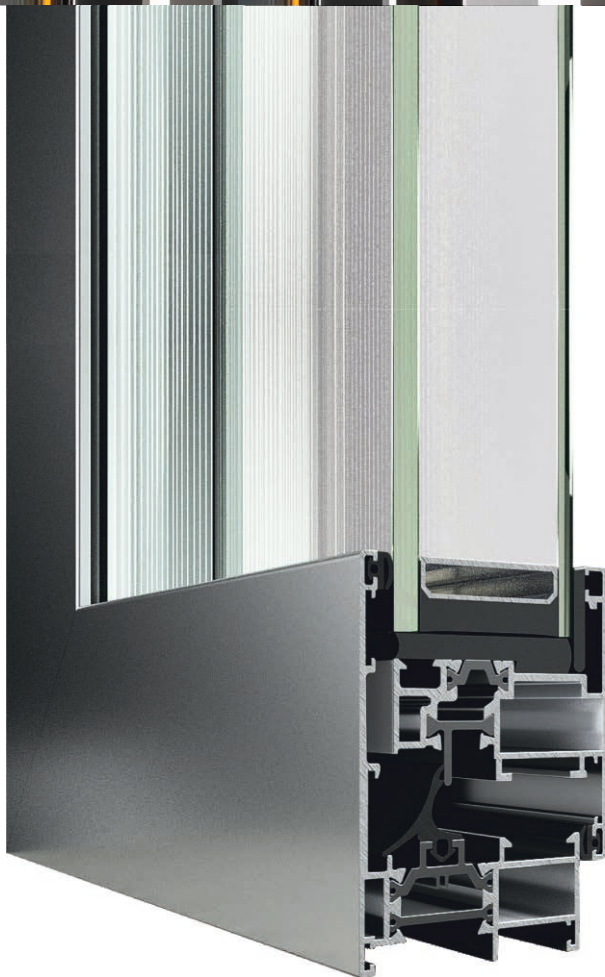




**ALTEST**  
**ESKIMOS**  
CASEMENT HINGED THERMAL SYSTEM

ESKIMOS has been designed and made in response to modern requirements of home construction. This system offers a variety of profiles that enable fabrication of different optional types of opening action and various configurations.

- ▲ Possible use of PVC accessories provided with anti-theft protection.
- ▲ Use of intermediate seal of EPDM.
- ▲ Efficient system drainage/water removal.
- ▲ Various options for powder coating in any RAL color, timber patterns, etc.
- ▲ Optional installation of glazing packages of different thicknesses and possible use of triple glazing packages.
- ▲ Available with European Standard groove as well with 16mm groove.





# ALTEST LS38

MINIMAL LIFT & SLIDE THERMAL SYSTEM

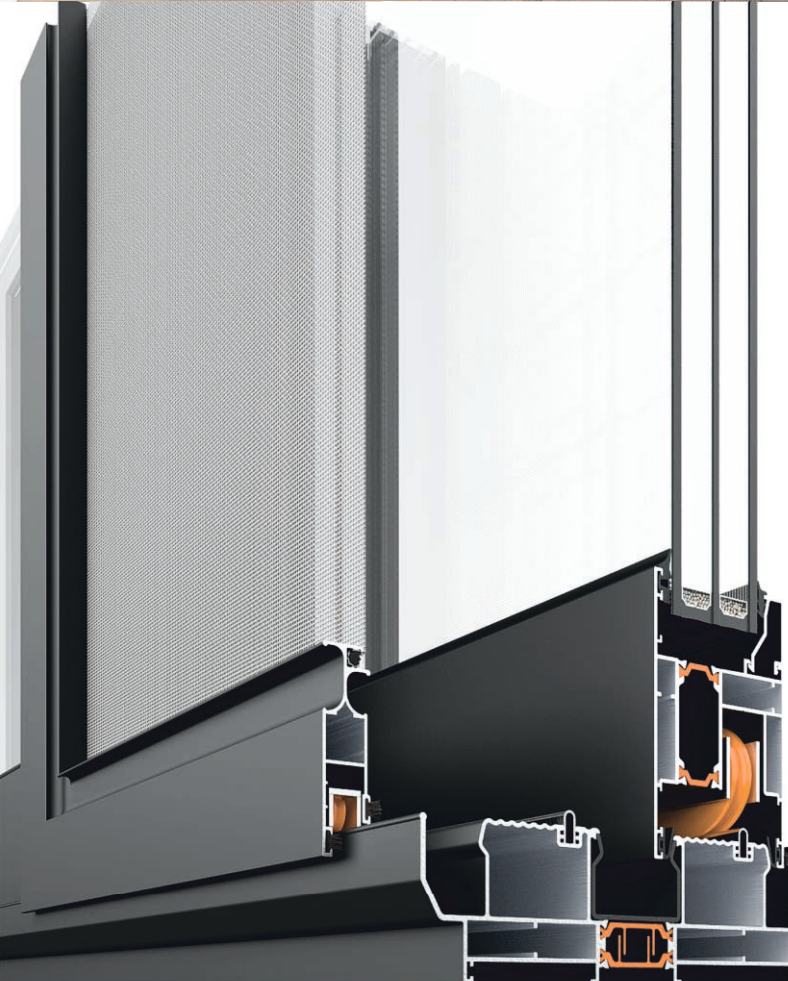


The smart water drainage system features a special valve located under the central profile, ensuring high watertightness. It includes cover caps with High Fin Weather seals for improved weather and sound performance. Central seals are made with EPDM gaskets, providing enhanced weather and sound insulation. This system is suitable for large openings, supporting windows up to 2500mm in height and 120kg in weight with special accessories.

SCAN FOR  
CERTIFICATES







## ALTEST LS70

MINIMAL LIFT & SLIDE THERMAL SYSTEM

The lift & slide system LS70 represents the new evolution of Altest's advanced systems, for projects with wide plans and impressive characteristics. The system complies perfectly with the modern trends of "transparent" architecture, combining high thermal isolation, safety and modern design. Its minimal design along with the state-of-the-art technology make it the ideal solution for projects enhancing natural lighting, satisfying even the most demanding requirements.

- ▶ Smart water drainage system, even for heavy conditions.
- ▶ Special water drainage valve, placed under the central interlocking profile, offering a high level of watertightness.
- ▶ Cover caps with EPDM sponge seals for high weather and acoustic performance.
- ▶ Ideal for large openings with maximum window height of 3000 mm and maximum weight of 400kg with special accessories.



**ALTEST**  
**OP80**  
OFFICE PARTITION SYSTEM

The Office system of ALTEST profiles is designed to facilitate distribution and arrangement of work places within the office space, as well as the serenity of employees. The product made of our profiles offers you fast assembly and high quality.



**ALTEST**  
**CW50**  
ALUMINIUM FACADE SYSTEM

The CW 50 system is a modern façade solution designed and made to ensure ease of installation; the system is based on modern construction requirements.

- Profiles 50 mm wide with high thermal insulation performance, waterproof.
- Optimized use of aluminum – exceptionally good materials distribution over the cross sectional area of the profiles in order to achieve optimized inertia parameters of the profiles with no adverse effect on security or functionality.
- Possibility to install glazing packages of various thicknesses from 6 mm to 44 mm

TECHNICAL CHARACTERISTICS

Watertightness  
Air Permeability  
Impact Resistance  
Wind Load  
Weighted Sound Reduction Index  
Thermal Transmittance

**class R7**  
**class 4**  
**class I5, E5**  
**800 Pa**  
**31 dB**

**U = 0.673 W/(m<sup>2</sup>K)**

SCAN FOR  
CERTIFICATES





# ALTEST SH10500

KINETIC FACADES HORIZONTAL SLIDING SHADING

## TECHNICAL CHARACTERISTICS

Max Sash Width	4000 mm
Max Sash Height	5000 mm
Max Sash Weight	400 Kg
Installation Depth	60 - 230 mm
Parking Space per Sash	300 - 4000 mm
Cladding Finishes	<b>Louver, Glass, sheet metal, Aluminium Composite Panel, HPL, Fiber Cement, Wood, ceramic</b>
Cladding Space	4 - 10 mm
Sash profile width	60 mm
Sash Profile Height	28 mm
Frame Profile Width	60 mm
Frame Profile Height	44 mm
Electric Motion	<b>Available</b>
Electric Locking System	<b>Available</b>
Manual Motion	<b>Available</b>
Manual Locking System	<b>Available</b>
Sliding Rollers	<b>Stainless Steel</b>
Alignment Rollers	<b>Stainless Steel</b>
Blackout	<b>Available</b>
Flyscreen	<b>Available</b>
Sealing	<b>Gaskets, Nylon Brush</b>



**ALTEST**  
**SH10600**  
 KINETIC FACADES VERTICAL FOLDING SHADING

TECHNICAL CHARACTERISTICS

Max Sash Width	<b>4000 mm</b>
Max Sash Height	<b>1500 mm</b>
Max Sash Weight	<b>200 Kg</b>
Installation Depth	<b>150 mm</b>
Parking Space per Leaf Pair	<b>341 - 440 mm</b>
Cladding Finishes	<b>Louver, Glass, sheet metal, Aluminium Composite Panel, HPL, Fiber Cement, Wood, ceramic</b>
Cladding Space	<b>4 - 10 mm</b>
Sash profile width	<b>60 mm</b>
Sash Profile Height	<b>28 mm</b>
Frame Profile Width	<b>60 mm</b>
Frame Profile Height	<b>44 mm</b>
Electric Motion	<b>Available</b>
Electric Locking System	<b>Available</b>
Manual Motion	<b>Not Available</b>
Manual Locking System	<b>Available</b>
Rolling	<b>Top - Bottom</b>
Rollers - Alignment	<b>Stainless Steel</b>
Blackout	<b>Available</b>
Flyscreen	<b>Available</b>
Sealing	<b>Gaskets, Nylon Brush</b>



# ALTEST SH10810

KINETIC FACADES VERTICAL PIVOT SHADING CLUSTERED

## TECHNICAL CHARACTERISTICS

Max Sash Width	<b>4000 mm</b>
Max Sash Height	<b>1200 mm</b>
Max Sash Weight	<b>200 Kg</b>
Installation Depth	<b>145 – 395 mm</b>
Parking Space per Leaf Pair	<b>120 mm</b>
Cladding Finishes	<b>Louver, Glass, sheet metal, Aluminium Composite Panel, HPL, Fiber Cement, Wood, ceramic</b>
Cladding Space	<b>4 – 10 mm</b>
Sash profile width	<b>60 mm</b>
Sash Profile Height	<b>28 mm</b>
Frame Profile Width	<b>60 mm</b>
Frame Profile Height	<b>44 mm</b>
Electric Motion	<b>Available</b>
Electric Locking System	<b>Available</b>
Manual Motion	<b>Not Available</b>
Manual Locking System	<b>Available</b>
Rolling	<b>Top – Bottom</b>
Rollers – Alignment	<b>Stainless Steel</b>
Blackout	<b>Available</b>
Flyscreen	<b>Available</b>
Sealing	<b>Gaskets, Nylon Brush</b>



**ALTEST**  
**SH10000**  
 KINETIC FACADES HORIZONTAL FOLDING SHADING

TECHNICAL CHARACTERISTICS

Max Sash Width	<b>1200 mm</b>
Max Sash Height	<b>5000 mm</b>
Max Sash Weight	<b>200 Kg</b>
Installation Depth	<b>150 mm</b>
Parking Space per Leaf Pair	<b>370 - 500 mm</b>
Cladding Finishes	<b>Louver, Glass, sheet metal, Aluminium Composite Panel, HPL, Fiber Cement, Wood, ceramic</b>
Cladding Space	<b>4 - 10 mm</b>
Sash profile width	<b>60 mm</b>
Sash Profile Height	<b>28 mm</b>
Frame Profile Width	<b>60 mm</b>
Frame Profile Height	<b>44 mm</b>
Electric Motion	<b>Available</b>
Electric Locking System	<b>Available</b>
Manual Motion	<b>Available</b>
Manual Locking System	<b>Available</b>
Rolling	<b>Top - Bottom</b>
Rollers - Alignment	<b>Stainless Steel</b>
Blackout	<b>Available</b>
Flyscreen	<b>Available</b>
Sealing	<b>Gaskets, Nylon Brush</b>



South Industrial Area  
T: +359 56 880440  
Burgas  
BULGARIA

[office@altest-kmg.com](mailto:office@altest-kmg.com)